

OSU Basketball Team History



126-127

128-129

130

131

132-141

Year-by-Year Results
Year-by-Year Statistics
Single-Game Records
Championship Teams
Game-by-Game Results

Year-by-Year Results



Year	Coach	Overall			Home	Away	Neutral	Conference		Home	Away	Postseason
		W	L	Pct.				Record	Place			
1901-02	J.B. Patterson	1	2	.333				—	none	—	—	
1902-03	Viggers/Trine	5	1	.833				—	none	—	—	
1903-04	Thorpe/Trine	7	3	.700				—	none	—	—	
1904-05	W.O. Trine	5	3	.625				—	none	—	—	
1905-06	W.O. Trine	10	0	1.000				—	none	—	—	
1906-07	W.O. Trine	17	1	.944				—	none	—	—	
1907-08	Roy Heater	7	4	.636				—	none	—	—	
1908-09	E.D. Angell	10	1	.909				3-0	1st NWC	1-0	2-0	
1909-10	E.D. Angell	9	7	.563				6-6	3rd NWC			
1910-11	Clifford Reed	3	5	.375				1-1	4th NWC	1-1	0-0	
1911-12	E.J. Stewart	16	3	.842	11-0	5-3	0-0	9-2	1st NWC	6-0	3-2	
1912-13	E.J. Stewart	15	7	.682				9-7	3rd NWC	6-2	3-5	
1913-14	E.J. Stewart	10	8	.556				5-7	4th NWC	4-2	1-5	
1914-15	E.J. Stewart	10	10	.500				3-9	6th NWC	2-4	1-5	
1915-16	E.J. Stewart	16	5	.762	8-1	8-4	0-0	5-3	t-1st PCC	3-1	2-2	
1916-17	Everett May	11	7	.611				7-6	4th PCC	3-2	4-4	
1917-18	Howard Ray	15	0	1.000				10-0	1st PCC North	6-0	4-0	
1918-19	H.W. Hargiss	3	13	.188	2-4	1-9	0-0	3-9	4th PCC North	2-4	1-5	
1919-20	H.W. Hargiss	7	12	.368				5-7	t-4th PCC	4-4	1-3	
1920-21	R.B. Rutherford	6	17	.261				2-14	6th PCC	1-5	1-9	
1921-22	R.B. Rutherford	21	2	.913				10-2	2nd PCC	4-2	6-0	
1922-23	Bob Hager	19	7	.731				4-4	t-3rd PCC North	3-1	1-3	
1923-24	Bob Hager	20	5	.800	8-0	12-5	0-0	6-2	2nd PCC North	4-0	2-2	
1924-25	Bob Hager	29	8	.784				7-2	t-1st PCC North	4-1	3-1	PCC
1925-26	Bob Hager	18	6	.750				6-4	2nd PCC North	4-1	2-3	
1926-27	Bob Hager	14	11	.560				4-6	4th PCC North	3-2	1-4	
1927-28	Bob Hager	15	16	.488				4-6	t-3rd PCC North	3-2	1-4	
1928-29	Slats Gill	12	8	.600				4-6	4th PCC North	2-3	2-3	
1929-30	Slats Gill	14	13	.519				7-9	4th PCC North	3-5	4-4	
1930-31	Slats Gill	19	9	.679				9-7	3rd PCC North	5-3	4-4	
1931-32	Slats Gill	12	12	.500				8-8	3rd PCC North	4-4	4-4	
1932-33	Slats Gill	21	6	.778				12-4	1st PCC	5-3	7-1	PCC
1933-34	Slats Gill	14	10	.583				7-9	3rd PCC North	5-3	2-6	
1934-35	Slats Gill	19	9	.679				12-4	1st PCC North	8-0	4-4	PCC
1935-36	Slats Gill	16	9	.540				10-6	2nd PCC North	6-2	4-4	
1936-37	Slats Gill	11	15	.423				5-11	4th PCC North	3-5	2-6	
1937-38	Slats Gill	17	16	.515				6-14	5th PCC North	4-6	2-8	
1938-39	Slats Gill	13	11	.542				6-10	4th PCC North	4-4	2-6	
1939-40	Slats Gill	27	11	.711				12-4	1st PCC North	6-2	6-2	PCC
1940-41	Slats Gill	19	9	.679	10-1	6-8	3-0	9-7	2nd PCC North	7-1	2-6	
1941-42	Slats Gill	18	9	.667				11-5	1st PCC North	6-2	5-3	PCC
1942-43	Slats Gill	19	9	.679				8-8	4th PCC North	6-2	2-6	
1943-44	Slats Gill	8	16	.333				5-11	t-3rd PCC North	3-5	2-6	
1944-45	Slats Gill	20	8	.714				10-6	3rd PCC North	7-1	3-5	
1945-46	Slats Gill	13	11	.542	7-4	4-7	2-0	10-6	2nd PCC North	6-2	4-4	
1946-47	Slats Gill	28	5	.848	14-0	11-4	3-1	13-3	1st PCC	8-0	5-3	PCC, NCAA
1947-48	Slats Gill	21	13	.618				10-6	t-1st PCC North	7-1	3-5	PCC
1948-49	Slats Gill	24	12	.667				12-4	1st PCC	8-0	4-0	PCC, NCAA
1949-50*	Slats Gill	13	14	.481	8-6	5-8	0-0	8-8	t-2nd PCC North	6-2	2-6	
1950-51	Slats Gill	14	18	.438	7-6	4-12	3-0	6-10	t-4th PCC North	4-4	2-6	
1951-52	Slats Gill	9	19	.596	5-10	3-9	1-0	3-13	5th PCC North	2-6	1-7	
1952-53	Slats Gill	11	18	.379	6-9	4-9	1-0	6-10	4th PCC North	3-5	3-5	
1953-54	Slats Gill	19	10	.733	10-3	6-3	3-4	11-5	1st PCC North	6-2	5-3	PCC
1954-55	Slats Gill	22	8	.733	14-3	7-3	1-2	15-1	1st PCC	8-0	7-1	PCC, NCAA
1955-56	Slats Gill	8	18	.308	5-9	2-7	1-2	5-11	t-6th PCC	3-6	2-5	
1956-57	Slats Gill	11	15	.423	7-5	4-8	0-2	6-10	6th PCC	4-3	2-7	
1957-58	Slats Gill	20	6	.769	12-1	7-4	1-1	12-4	t-1st PCC	7-1	5-3	PCC
1958-59	Slats Gill	13	13	.500	9-6	4-7	0-0	7-9	6th PCC	3-5	4-4	
1959-60**	Gill/Valenti	15	11	.750	10-4	4-7	1-0	—	independent	—	—	
1960-61	Slats Gill	14	12	.538	8-4	3-8	3-0	—	independent	—	—	
1961-62	Slats Gill	24	5	.828	12-1	8-3	4-1	—	independent	—	—	NCAA
1962-63	Slats Gill	22	9	.710	9-3	6-3	7-3	—	independent	—	—	NCAA

Year-by-Year Results

Year	Coach	Overall						Conference				Postseason
		W	L	Pct.	Home	Away	Neutral	Record	Place	Home	Away	
1963-64	Slats Gill	25	4	.862	12-0	9-2	4-2	—	independent	—	—	NCAA
1964-65	Paul Valenti	16	10	.615	9-3	3-7	4-0	7-7	4th AAWU	5-2	2-5	
1965-66	Paul Valenti	21	7	.750	9-1	8-5	4-1	12-2	1st AAWU	6-1	6-1	NCAA
1966-67	Paul Valenti	14	14	.500	7-4	6-7	1-3	8-6	t-2nd AAWU	4-3	4-3	
1967-68	Paul Valenti	12	13	.480	7-4	2-7	3-2	5-9	t-5th AAWU	4-3	1-6	
1968-69	Paul Valenti	12	14	.462	7-4	4-8	1-2	5-9	t-5th Pac-8	3-4	2-5	
1969-70	Paul Valenti	10	16	.385	8-4	1-10	1-2	4-10	7th Pac-8	4-3	0-7	
1970-71	Ralph Miller	12	14	.462	7-5	1-9	4-0	4-10	6th Pac-8	3-4	1-6	
1971-72	Ralph Miller	18	10	.643	9-4	7-5	2-1	9-5	t-3rd Pac-8	4-3	5-2	
1972-73	Ralph Miller	15	11	.577	9-2	3-8	3-1	6-8	t-5th Pac-8	6-1	0-7	
1973-74	Ralph Miller	13	13	.500	7-4	2-8	4-1	6-8	5th Pac-8	4-3	2-5	
1974-75	Ralph Miller	19	12	.613	10-2	7-5	2-5	10-4	2nd Pac-8	5-2	5-2	NCAA
1975-76***	Ralph Miller	18	9	.667	8-2	6-5	4-2	10-4	t-2nd Pac-8	5-2	5-2	
1976-77	Ralph Miller	16	13	.552	6-5	7-6	3-2	8-6	t-3rd Pac-8	5-2	3-4	
1977-78	Ralph Miller	16	11	.593	10-2	4-6	2-3	9-5	2nd Pac-8	5-2	4-3	
1978-79	Ralph Miller	18	10	.643	11-2	5-7	2-1	11-7	3rd Pac-10	8-1	3-6	NIT
1979-80	Ralph Miller	26	4	.867	13-0	10-3	3-1	16-2	1st Pac-10	9-0	7-2	NCAA
1980-81	Ralph Miller	26	2	.929	11-1	12-0	3-1	17-1	1st Pac-10	8-1	9-0	NCAA
1981-82	Ralph Miller	25	5	.833	11-0	8-3	6-2	16-2	1st Pac-10	9-0	7-2	NCAA
1982-83	Ralph Miller	20	11	.645	11-4	6-6	3-1	12-6	t-3rd Pac-10	7-2	5-4	NIT
1983-84	Ralph Miller	22	7	.759	11-0	7-6	4-1	15-3	t-1st Pac-10	9-0	6-3	NCAA
1984-85	Ralph Miller	22	9	.710	9-4	10-5	3-0	12-6	t-3rd Pac-10	6-3	6-3	NCAA
1985-86	Ralph Miller	12	15	.444	5-7	5-7	2-1	8-10	t-5th Pac-10	3-6	5-4	
1986-87	Ralph Miller	19	11	.633	10-4	7-5	2-2	10-8	t-3rd Pac-10	6-3	4-5	Pac-10, NIT
1987-88	Ralph Miller	20	11	.645	9-3	6-6	5-2	12-6	t-2nd Pac-10	7-2	5-4	Pac-10, NCAA
1988-89	Ralph Miller	22	8	.733	10-2	8-4	4-2	13-5	t-3rd Pac-10	7-2	6-3	Pac-10, NCAA
1989-90	Jim Anderson	22	7	.759	11-1	8-5	3-1	15-3	t-1st Pac-10	9-0	6-3	Pac-10, NCAA
1990-91	Jim Anderson	14	14	.500	12-2	1-11	1-1	8-10	t-5th Pac-10	7-2	1-8	
1991-92	Jim Anderson	15	16	.484	9-5	3-10	3-1	7-11	7th Pac-10	5-4	2-7	
1992-93	Jim Anderson	13	14	.481	8-4	4-9	1-1	9-9	t-5th Pac-10	5-4	4-5	
1993-94	Jim Anderson	6	21	.222	4-9	0-10	2-2	2-16	10th Pac-10	2-7	0-9	
1994-95	Jim Anderson	9	18	.333	7-5	2-11	0-2	6-12	7th Pac-10	4-5	2-7	
1995-96	Eddie Payne	6	21	.222	4-8	2-10	0-3	4-14	9th Pac-10	3-6	1-8	
1996-97	Eddie Payne	7	20	.259	6-7	0-12	1-1	3-15	9th Pac-10	3-6	0-9	
1997-98	Eddie Payne	13	17	.453	7-8	4-8	2-1	3-15	t-9th Pac-10	1-8	2-7	
1998-99	Eddie Payne	13	14	.481	12-2	1-9	0-3	7-11	t-7th Pac-10	7-2	0-9	
1999-00	Eddie Payne	13	16	.448	9-6	2-9	2-1	5-13	t-8th Pac-10	3-6	2-7	
2000-01	Ritchie McKay	10	20	.333	7-7	1-10	2-3	4-14	t-9th Pac-10	3-6	1-8	
2001-02	Ritchie McKay	12	17	.413	8-7	4-8	0-2	4-14	9th Pac-10	2-7	2-7	
2002-03	Jay John	13	15	.464	7-7	6-7	0-1	6-12	t-6th Pac-10	3-6	3-6	Pac-10
2003-04	Jay John	12	16	.429	11-6	1-10	0-0	6-12	9th Pac-10	5-4	1-8	
2004-05	Jay John	17	15	.531	12-2	2-10	3-3	8-10	5th Pac-10	8-1	0-9	Pac-10, NIT

TOTALS

^1546 1098

716-666

*1949-50 was the first season in Gill Coliseum.

**In 1959-60, Slats Gill missed 12 games due to illness.

OSU went 6-8 under Gill and 9-3 under Valenti.

***In 1975-76, the NCAA required OSU to forfeit 15 wins under a court injunction.

^ OSU's overall record as recognized by the NCAA.

COMPOSITE COACHING RECORDS

COACH	YEARS	SEASONS	W	L	PCT.
Slats Gill	1929-64	36	599	392	.604
Ralph Miller	1971-89	19	359	186	.659
Bob Hager	1923-28	6	115	53	.685
Paul Valenti	1965-70	6	91	82	.526
Jim Anderson	1990-95	6	79	90	.467
E.J. Stewart	1912-16	5	67	33	.670
Eddie Payne	1996-00	5	52	88	.371
Jay John	2003-present	3	42	46	.477
W.O. Trine	1903-07	5	39	7	.848
R.B. Rutherford	1921-22	2	27	19	.587
Ritchie McKay	2001-02	2	22	37	.372
E.D. Angell	1909-10	2	19	8	.704
Howard Ray	1918	1	15	0	1000
Everett May	1917	1	11	7	.611
H.W. Hargiss	1919-20	2	10	25	.286
Roy Heater	1908	1	7	4	.636
J.W. Viggers	1903	1	5	1	.833
Clifford Reed	1911	1	3	5	.375
J.B. Patterson	1902	1	1	2	.333

Year-by-Year Statistics

OREGON STATE STATISTICS

YEAR	GP	FG-FGA	PCT	3FG-FGA	PCT	FT-FTA	PCT	REB (AVG)	PF	AST (AVG)	TO (AVG)	BLK (AVG)	STL (AVG)	PTS (AVG)
1953-54	29	638-1784	.360	—	—	510-896	.570	1139 (39.3)	579	—	—	—	—	1781 (61.8)
1954-55	30	680-1810	.376	—	—	469-725	.647	1250 (41.7)	508	—	—	—	—	1829 (60.9)
1955-56	26	536-1667	.321	—	—	417-709	.590	1150 (44.2)	460	—	—	—	—	1525 (58.8)
1956-57	26	519-1550	.335	—	—	522-759	.688	1130 (43.5)	432	—	—	—	—	1560 (60.0)
1957-58	26	635-1690	.376	—	—	412-637	.647	1178 (45.3)	500	—	—	—	—	1682 (64.7)
1958-59	26	578-1654	.349	—	—	380-592	.642	1281 (49.3)	536	—	—	—	—	1535 (59.0)
1959-60	26	534-1475	.362	—	—	392-642	.610	1261 (48.5)	516	—	—	—	—	1460 (56.2)
1960-61	26	582-1498	.389	—	—	417-595	.701	1115 (42.9)	494	—	—	—	—	1582 (60.8)
1961-62	29	746-1830	.407	—	—	518-723	.666	1499 (51.7)	498	—	—	—	—	2010 (69.3)
1962-63	31	790-1944	.406	—	—	449-608	.738	1439 (46.4)	588	—	—	—	—	2026 (65.4)
1963-64	29	800-1828	.438	—	—	518-739	.701	1302 (44.9)	578	—	—	—	—	2117 (73.0)
1964-65	26	577-1326	.435	—	—	401-563	.712	914 (35.2)	499	—	—	—	—	1555 (59.6)
1965-66	28	630-1413	.446	—	—	440-586	.750	1028 (36.7)	446	—	—	—	—	1694 (60.5)
1966-67	28	606-1411	.429	—	—	386-575	.671	968 (34.6)	524	—	—	—	—	1598 (57.0)
1967-68	25	606-1235	.491	—	—	378-511	.740	773 (30.9)	446	—	—	—	—	1592 (63.7)
1968-69	26	643-1358	.474	—	—	360-538	.669	981 (37.7)	492	—	—	—	—	1646 (63.3)
1969-70	26	698-1532	.456	—	—	327-476	.687	1014 (39.0)	469	—	—	—	—	1723 (66.2)
1970-71	26	801-1752	.457	—	—	381-554	.689	1082 (41.6)	535	449 (17.3)	—	—	—	1983 (76.3)
1971-72	28	830-1755	.473	—	—	503-677	.745	1098 (39.2)	513	491 (17.5)	—	—	—	2163 (77.3)
1972-73	26	804-1762	.466	—	—	361-482	.749	1093 (42.0)	565	461 (17.7)	—	—	—	1969 (75.7)
1973-74	26	758-1588	.477	—	—	329-479	.689	931 (35.8)	555	500 (19.2)	—	—	—	1845 (71.0)
1974-75	31	948-1938	*.489	—	—	395-557	*.709	1084 (35.0)	625	566 (18.3)	477 (15.4)	—	—	2291 (73.9)
1975-76	27	839-1597	*.525	—	—	393-548	.717	853 (31.6)	554	485 (18.0)	449 (16.6)	—	—	2071 (76.7)
1976-77	29	862-1723	.500	—	—	355-478	*.743	910 (31.3)	616	497 (17.1)	473 (16.3)	—	—	2079 (71.7)
1977-78	27	718-1532	.469	—	—	316-486	.650	843 (31.2)	609	437 (16.2)	495 (18.3)	55 (2.0)	210 (7.8)	1752 (64.9)
1978-79	28	842-1617	.521	—	—	408-615	.663	928 (33.1)	611	*571 (20.4)	477 (17.0)	73 (2.6)	*293 (10.5)	2092 (74.7)
1979-80	30	943-1732	*.544	—	—	432-627	.689	978 (32.6)	624	* 651 (21.7)	500 (16.7)	54 (1.8)	*274 (9.1)	2318 (77.3)
1980-81	28	862-1528	*.564	—	—	420-626	.671	868 (31.0)	554	597 (21.3)	391 (14.0)	78 (2.8)	239 (8.5)	2144 (76.6)
1981-82	30	810-1518	*.534	—	—	467-653	.715	879 (29.3)	516	*490 (16.3)	420 (14.0)	54 (1.8)	*246 (8.2)	2087 (69.6)
1982-83	31	813-1597	.509	—	—	504-706	.714	896 (28.9)	577	*524 (16.9)	466 (15.0)	46 (1.5)	206 (6.6)	2130 (68.7)
1983-84	29	647-1253	.516	—	—	450-620	*.726	769 (26.5)	476	428 (14.8)	372 (12.9)	41 (1.4)	150 (5.2)	1744 (60.1)
1984-85	31	759-1445	*.525	—	—	444-662	.671	845 (27.3)	523	*501 (16.2)	407 (13.1)	59 (1.9)	225 (7.3)	1962 (63.3)
1985-86	27	667-1468	.454	—	—	310-487	.637	845 (31.3)	489	452 (16.7)	345 (12.8)	56 (2.1)	197 (7.3)	1644 (60.9)
1986-87	30	794-1678	.473	56-170	.329	405-592	.684	959 (32.0)	538	*514 (17.1)	358 (12.0)	107 (3.6)	*227 (7.6)	2049 (68.3)
1987-88	31	825-1676	.492	97-239	.406	346-499	.693	801 (25.8)	519	*573 (18.5)	349 (11.3)	53 (1.7)	*288 (9.3)	2093 (67.5)
1988-89	30	878-1798	.488	165-434	.380	393-578	.680	865 (28.8)	585	*579 (19.3)	333 (11.1)	83 (2.8)	* 320 (10.7)	2314 (77.1)
1989-90	29	884-1816	.487	126-375	.336	378-558	.677	942 (32.5)	582	*538 (18.6)	322 (11.1)	101 (3.5)	*277 (9.6)	2272 (78.4)
1990-91	28	783-1642	.477	133-386	.345	385-520	*.740	886 (31.6)	451	468 (16.7)	391 (14.0)	97 (3.5)	211 (7.5)	2084 (74.4)
1991-92	31	860-1771	.486	165-467	.353	439-602	.729	982 (31.7)	535	549 (17.7)	461 (14.8)	113 (3.6)	238 (7.7)	2324 (75.0)
1992-93	27	656-1477	.444	143-440	.325	413-586	.705	890 (33.0)	477	425 (15.7)	418 (15.5)	111 (4.1)	219 (8.1)	1868 (69.2)
1993-94	27	676-1607	.421	135-450	.300	379-608	.623	896 (33.2)	527	366 (13.6)	445 (16.5)	56 (2.1)	*235 (8.7)	1866 (69.1)
1994-95	27	717-1561	.459	110-343	.321	496-702	.707	916 (33.9)	518	380 (14.1)	453 (16.8)	66 (2.4)	211 (7.8)	2040 (75.6)
1995-96	27	544-1346	.404	130-415	.313	300-477	.629	778 (28.8)	522	303 (11.2)	454 (16.8)	41 (1.5)	188 (7.0)	1518 (56.2)
1996-97	27	666-1531	.435	149-459	.325	383-619	.619	982 (36.4)	571	364 (13.5)	521 (19.3)	90 (3.3)	189 (7.0)	1864 (69.0)
1997-98	30	775-1683	.460	155-470	.330	417-691	.603	1070 (35.7)	633	433 (14.4)	519 (17.3)	103 (3.4)	256 (8.5)	2122 (70.7)
1998-99	29	618-1433	.431	161-460	.350	350-567	.617	998 (37.0)	494	339 (12.5)	426 (15.8)	97 (3.3)	173 (6.0)	1747 (64.7)
1999-00	29	714-1605	.445	206-571	.361	383-584	.656	1008 (34.8)	613	447 (15.4)	476 (16.4)	84 (2.9)	221 (7.6)	2017 (69.6)
2000-01	30	632-1448	.436	217-650	.334	375-516	.727	821 (27.4)	544	399 (13.3)	380 (12.7)	46 (1.5)	155 (5.2)	1856 (61.9)
2001-02	29	643-1431	.449	187-528	.354	393-542	.725	876 (30.2)	494	401 (13.8)	414 (14.3)	71 (2.4)	129 (4.4)	1866 (64.3)
2002-03	28	671-1595	.421	126-420	.300	435-634	.686	1022 (36.5)	464	382 (13.6)	383 (13.7)	98 (3.5)	150 (5.4)	1903 (68.0)
2003-04	28	728-1738	.419	162-475	.341	400-575	.696	1009 (36.0)	510	399 (14.3)	395 (14.1)	64 (2.3)	203 (7.3)	2018 (72.1)
2004-05	32	810-1826	.444	194-509	.381	514-710	.724	1094 (34.2)	560	429 (13.4)	471 (14.7)	* 126 (3.9)	193 (6.0)	2328 (72.8)

School Season Records (Highs and/or Lows) Are in Bold

* led the conference

Year-by-Year Statistics

OPPONENT STATISTICS

YEAR	GP	FG-FGA	.PCT	3FG-FGA	.PCT	FT-FTA	.PCT	REB (AVG)	PF	AST (AVG)	TO (AVG)	BLK (AVG)	STL (AVG)	PTS (AVG)
1953-54	29	512-1614	.317	—	—	561-881	.636	837 (28.8)	547	—	—	—	—	1585 (54.7)
1954-55	30	557-1722	.323	—	—	546-852	.648	947 (31.6)	435	—	—	—	—	1660 (55.3)
1955-56	26	574-1659	.346	—	—	497-752	.660	1092 (42.0)	456	—	—	—	—	1645 (63.4)
1956-57	26	537-1614	.332	—	—	486-738	.659	974 (37.5)	462	—	—	—	—	1561 (60.0)
1957-58	26	513-1519	.338	—	—	424-676	.627	869 (33.4)	470	—	—	—	—	1449 (55.7)
1958-59	26	562-1484	.379	—	—	491-764	.643	1211 (46.6)	446	—	—	—	—	1595 (61.3)
1959-60	26	492-1465	.336	—	—	474-727	.652	1156 (44.5)	486	—	—	—	—	1458 (56.0)
1960-61	26	513-1432	.358	—	—	492-699	.704	1078 (41.5)	434	—	—	—	—	1506 (57.9)
1961-62	29	652-1741	.374	—	—	482-724	.715	1216 (41.9)	551	—	—	—	—	1676 (57.8)
1962-63	31	688-1834	.375	—	—	499-794	.628	1297 (41.8)	498	—	—	—	—	1886 (60.8)
1963-64	29	601-1595	.375	—	—	496-770	.644	1126 (38.8)	578	—	—	—	—	1688 (58.2)
1964-65	26	522-1332	.391	—	—	481-680	.707	1023 (39.3)	472	—	—	—	—	1525 (58.5)
1965-66	28	559-1482	.376	—	—	409-592	.690	990 (35.4)	455	—	—	—	—	1527 (54.5)
1966-67	28	596-1425	.418	—	—	476-709	.671	1054 (37.6)	465	—	—	—	—	1669 (59.4)
1967-68	25	557-1395	.399	—	—	458-658	.696	985 (39.4)	412	—	—	—	—	1572 (62.9)
1968-69	26	612-1496	.409	—	—	445-709	.629	1060 (40.8)	435	—	—	—	—	1668 (64.1)
1969-70	26	652-1479	.441	—	—	456-660	.691	1000 (38.5)	392	—	—	—	—	1750 (67.3)
1970-71	26	758-1660	.456	—	—	521-738	.706	1161 (44.7)	429	351 (13.5)	—	—	—	2037 (78.3)
1971-72	28	775-1681	.461	—	—	453-665	.681	1119 (40.0)	524	430 (15.4)	—	—	—	2003 (71.5)
1972-73	26	721-1649	.437	—	—	386-558	.692	1086 (41.8)	498	411 (15.8)	—	—	—	1828 (70.3)
1973-74	26	669-1481	.452	—	—	410-603	.680	1008 (38.8)	548	386 (14.8)	—	—	—	1748 (67.2)
1974-75	31	868-1837	.473	—	—	432-635	.680	1200 (38.7)	593	449 (14.5)	574 (18.5)	—	—	*2168 (69.9)
1975-76	27	793-1586	.500	—	—	371-546	.679	996 (36.9)	580	348 (12.9)	545 (20.2)	—	—	1957 (72.5)
1976-77	29	812-1615	.503	—	—	429-612	.701	965 (33.3)	665	465 (16.0)	531 (18.3)	—	—	2053 (70.8)
1977-78	27	678-1399	.485	—	—	441-647	.682	948 (35.1)	565	488 (18.1)	550 (20.4)	—	—	1797 (66.6)
1978-79	28	692-1381	.501	—	—	431-643	.670	873 (31.2)	606	396 (14.1)	641 (22.9)	—	—	*1815 (64.8)
1979-80	30	785-1635	.480	—	—	432-664	.651	964 (32.1)	618	411 (13.7)	601 (20.0)	—	—	2002 (66.7)
1980-81	28	652-1452	.449	—	—	401-577	.695	855 (30.5)	611	344 (12.3)	552 (19.7)	37 (1.3)	148 (5.3)	*1705 (60.9)
1981-82	30	671-1422	.472	—	—	308-479	.643	818 (27.3)	629	311 (10.4)	583 (19.4)	48 (1.6)	168 (5.6)	*1650 (55.0)
1982-83	31	764-1543	.495	—	—	418-567	.737	917 (29.6)	664	357 (11.5)	576 (18.6)	65 (2.1)	192 (6.2)	1948 (62.8)
1983-84	29	664-1333	.498	—	—	290-412	.704	721 (24.9)	583	312 (10.8)	384 (13.2)	67 (2.3)	140 (4.8)	*1618 (55.8)
1984-85	31	702-1444	.486	—	—	384-525	.731	833 (26.9)	621	354 (11.4)	461 (14.9)	57 (1.8)	191 (6.2)	*1788 (57.7)
1985-86	27	658-1373	.479	—	—	344-495	.695	898 (33.3)	499	337 (12.5)	395 (14.6)	67 (2.5)	156 (5.8)	*1660 (61.5)
1986-87	30	710-1544	.460	78-228	.342	412-596	.691	997 (33.2)	547	399 (13.3)	471 (15.7)	66 (2.2)	165 (5.5)	*1910 (63.7)
1987-88	31	735-1474	.499	123-309	.398	359-523	.686	985 (31.8)	518	453 (14.6)	588 (19.0)	79 (2.5)	135 (4.4)	*1952 (63.0)
1988-89	30	770-1544	.499	109-312	.349	435-617	.705	1047 (34.9)	530	443 (14.8)	583 (19.4)	86 (2.9)	147 (4.9)	2084 (69.5)
1989-90	29	750-1564	.480	116-320	.363	459-645	.712	1040 (35.9)	506	427 (14.7)	534 (18.4)	86 (3.0)	144 (5.0)	2075 (71.6)
1990-91	28	820-1594	.514	154-372	.414	367-528	.695	897 (32.0)	462	459 (16.4)	426 (15.2)	65 (2.3)	189 (6.8)	2161 (77.2)
1991-92	31	872-1833	.476	167-455	.367	392-560	.700	1078 (34.8)	575	461 (14.9)	495 (16.0)	45 (1.5)	232 (7.5)	2303 (74.3)
1992-93	27	675-1520	.444	125-371	.337	343-506	.678	945 (35.0)	529	350 (13.0)	453 (16.8)	66 (2.4)	197 (7.3)	1818 (67.3)
1993-94	27	783-1651	.474	131-387	.339	445-651	.684	1157 (42.9)	530	398 (14.7)	476 (17.6)	90 (3.3)	220 (8.2)	2142 (79.3)
1994-95	27	778-1684	.462	175-464	.377	428-618	.693	1045 (38.7)	586	451 (16.7)	450 (16.7)	81 (3.0)	208 (7.7)	2159 (80.0)
1995-96	27	604-1368	.442	174-523	.333	436-634	.688	982 (36.4)	485	392 (14.5)	448 (16.6)	73 (2.7)	219 (8.1)	1818 (67.3)
1996-97	27	702-1563	.449	165-466	.354	485-705	.688	1006 (37.3)	552	422 (15.6)	467 (17.3)	85 (3.1)	238 (8.8)	2054 (76.1)
1997-98	30	677-1588	.426	182-531	.343	558-788	.708	1022 (34.1)	597	421 (14.0)	560 (18.7)	95 (3.2)	218 (7.3)	2094 (69.8)
1998-99	29	608-1528	.398	169-539	.314	359-569	.631	961 (35.6)	516	358 (13.3)	371 (13.7)	92 (3.2)	202 (7.0)	1744 (64.6)
1999-00	29	684-1602	.427	196-555	.353	452-688	.657	1040 (35.9)	544	389 (13.4)	465 (16.0)	84 (2.9)	204 (7.0)	2016 (69.5)
2000-01	30	691-1528	.452	182-529	.344	349-517	.675	994 (33.1)	517	393 (13.1)	396 (13.2)	83 (2.8)	163 (5.4)	*1913 (63.8)
2001-02	29	706-1640	.430	182-521	.349	334-484	.690	996 (34.3)	531	382 (13.2)	363 (12.5)	81 (2.8)	202 (7.0)	*1928 (66.5)
2002-03	28	719-1678	.428	177-498	.355	299-438	.683	1020 (36.4)	567	382 (13.6)	386 (13.8)	79 (2.8)	178 (6.4)	1914 (68.4)
2003-04	28	749-1628	.460	196-534	.367	377-548	.688	1050 (37.5)	565	422 (15.1)	470 (16.8)	104 (3.7)	190 (6.8)	2071 (74.0)
2004-05	32	879-1964	.448	187-590	.317	418-624	.670	1191 (37.2)	639	436 (13.6)	479 (15.0)	84 (2.6)	219 (6.8)	2363 (73.8)

Opponent Season Records (Highs and/or Lows) Are in Bold

* led the conference

Single-Game Records

TEAM RECORDS

Points	116vs. Arizona, 1/13/1979 (116-80)
.....	116vs. UC San Diego, 11/25/1997 (116-78)
Fewest Points	18at Stanford, 1/28/1980 (18-16)
Combined Score	230vs. Loyola Marymount, 12/19/1989 (113-117)
Winning Margin	68vs. Southern Colorado, 11/20/2000 (91-23)
Field Goals Made	52vs. Texas Wesleyan, 12/1/1978 (52-for-81)
.....	52vs. UC San Diego, 11/25/1997 (52-for-87)
Field Goals Attempted	98vs. Idaho, 2/22/1964 (48-for-98)
Field Goal Pct.732at UCLA, 2/11/1984 (30-for-41)
Field Goal Pct. For Half917vs. Washington State, 2/18/1984 (11-for-12)
3-Pt Field Goals Made	13three times
.....	last vs. Southern Utah, 11/30/2001 (13-for-22)
3-Pt. Field Goals Attempted	32vs. UCLA, 2/2/2002 (7-for-32)
3-Pt FG Pct. (10+ Att.)714vs. Portland, 11/26/1988 (10-for-14)
Free Throws Made	46vs. Arizona State, 2/28/1983 (46-for-63)
Free Throws Attempted	63vs. Arizona State, 2/28/1983 (46-for-63)
Free Throw Pct. (10-19 Att.)	1.000vs. Idaho, 2/4/1967 (10-for-10)
.....	1.000vs. Michigan State, 12/29/1988 (10-for-10)
Free Throw Pct. (20-29 Att.)955at Washington State, 2/23/2002 (21-for-22)
Free Throw Pct. (30+ Att.)968vs. Memphis State, 12/19/1990 (30-for-31)
Fewest Free Throws	0vs. Washington, 2/20/1993
Fewest Free Throw Attempted	0vs. Washington, 2/20/1993
Rebounds	76vs. Washington State, 3/3/1958
Fewest Rebounds	14three times
.....	last vs. Stanford, 1/28/1988
Rebounding Margin	41vs. Washington State, 3/3/1958 (76-35)
Assists	41vs. Texas Wesleyan, 12/1/1978
Blocked Shots	10vs. College of Notre Dame, 12/30/1998
.....	10vs. Oregon, 1/30/1999
Steals	27at Hawaii-Hilo, 12/22/1985
Fouls	35at Canisus, 12/3/1949
Fewest Fouls	6at Washington, 1/5/1985
Turnovers	39at Portland State, 12/16/1976
Fewest Turnovers	3at USC, 2/2/1989

OPPONENT RECORDS

Points	117by Loyola Marymount, 12/19/1989 (113-117)
Fewest Points	16by Stanford, 1/28/1980 (18-16)
Losing Margin	51by Arizona, 1/23/1997 (99-48)
Rebounds	67by USC, 1/14/1956
Field Goals Made	49by USC, 2/20/1971 (49-for-88)
Field Goals Attempted	88by USC, 2/20/1971 (49-for-88)
Free Throws Made	36by Oregon, 3/10/1967 (36-for-43)
Free Throws Attempted	50by North Carolina, 12/30/1967 (34-for-50)

MISCELLANEOUS RECORDS

LONGEST OVERALL WINNING STREAKS

Streak	Years
27	1904-05 to 1906-07
26	1980-81
17	twice: 1916-17 to 1917-18; 1921-22 to 1922-23
16	1961-62
14	1979-80
13	twice: 1911-12 to 1912-13; 1954-55
12	1963-64
10	seven times: last in 1989-90

LONGEST OVERALL LOSING STREAKS

Streak	Years
14	1995-96
10	twice: 1920-21; 1949-50 to 1950-51
9	twice: 1919-20; 1993-94 to 1994-95
8	three times: 1943-44; 1955-56; 1970-71
7	six times: last in 1967-68

LONGEST OVERALL HOME WINNING STREAKS

Streak	Years
24	1979-80 to 1980-81
17	twice: 1983-84 to 1984-85; 1989-90 to 1990-91

LONGEST OVERALL HOME LOSING STREAKS

Streak	Years
6	twice: 1955-56; 1995-96
5	twice: 1999-00; 2001-02

LONGEST OVERALL ROAD WINNING STREAKS

Streak	Years
13	1980-81 to 1981-82
7	1965-66 to 1966-67
6	three times: 1954-55; 1961-62; 1962-63 to 1963-64

LONGEST OVERALL ROAD LOSING STREAKS

Streak	Years
21	1995-96 to 1996-97
16	1993-94 to 1994-95
14	1999-00 to 2000-01

LONGEST OVERALL ROAD & NEUTRAL WINNING STREAKS

Streak	Years
15	1980-81
9	twice: 1961-62; 1989-90

LONGEST OVERALL ROAD & NEUTRAL LOSING STREAKS

Streak	Years
17	1993-94 to 1994-95
14	1995-96 to 1996-97
11	2002-03 to 2003-04

LONGEST CONFERENCE WINNING STREAKS

Streak	Years
20	1979-80 to 1980-81
14	1953-54 to 1954-55
12	1916-17 to 1917-18
10	twice: 1911-12 to 1912-13; 1921-22

LONGEST CONFERENCE LOSING STREAKS

Streak	Years
16	1919-20 to 1920-21
14	1995-96
13	1937-38 to 1938-39

(home, road and neutral-site records date to 1949-50)

Championship Teams

Note: These were the student-athletes who played on championship basketball teams at Oregon State University. These include Northwest, Pacific Coast, AAWU, Pacific-10 Conference and NCAA Regional championship teams.

1909 Northwest Conference Champions

Roswell Hamilton
Mervin Horton
Harry Moore
Hal Pugh
Teddy Reed
Fred Spires

1912 Northwest Conference Champions

Bert Burdick
Grover Cate
Harry Cooper
Arthur Jordan
Claude Mattson
Everett May
George McFarland
B.B. Walker

1916 Pacific Coast Conference Co-Champions

Hi Blagg
Cecil Blakely
Miles Johns
George Kathan
Chuck Low
David Marshall
Spike Mix
Hod Ray
Ade Sieberts

1918 Pacific Coast Conference Northern Champions

Lee Bissett
Jack Eakin
Wayne Gurley
Cac Hubbard
Dutch Krueger
Hod Ray
Butts Reardon
Robby Robinson

1925 Pacific Coast Conference Northern Champions

Loris Baker
George Brown
Duke Diwoy
Hap Eilertsen
Ray Graap
Red Ridings
Carlos Steele
Pete Stodard

1933 Pacific Coast Conference Champions

Ev Davis
Arthur Gustafson
George Hibbard
Fred Hill
Clarence James
Clarence Lenchitsky
Ed Lewis
Fred MacDonald
Skeet O'Connell
Merle Taylor

1935 Pacific Coast Conference Northern Champions

Bob Bergstrom
Earl Conkling
Cliff Folen
George Hibbard
Fred Hill
Wilbur Kidder
Dick Lyman
Art Merryman
Wally Palmberg
Bud Rieke
Merle Taylor
Hub Tuttle

1940 Pacific Coast Conference Northern Champions

Sam Dement
Al Hunter
Merle Kruger
Frank Mandic
John Mandic
Jack Mulder
Tony Romano
Clayton Shaw
Don Stitt
Paul Valenti

1942 Pacific Coast Conference Northern Champions

Lew Beck
Sam Dement
Don Durdan
Don Hall
Howard Jeffries
John Mandic
Doug Martin
Bill McCluskey
George McNutt
Jack Mulder
Paul Valenti
Glen Warren

1947 Pacific Coast Conference Champions

Erland Anderson
Lew Beck
Norm Carey
Cliff Crandall
Doug Martin
Alex Peterson
Red Rocha
Frank Roelandt
Don Samuel
Morrie Silver
Dan Torrey

1949 Pacific Coast Conference Champions / 4th in NCAA

Dick Ballantyne
Jim Catterall
Cliff Crandall
Ed Fleming
Bill Harper
Tommy Holman
Glen Kinney
Alex Peterson
Len Rinearson
Paul Sliper
Ray Snyder
Dan Torrey
Harey Watt

1954 Pacific Coast Conference Northern Champions

Jerry Crimins
Jay Dean
Ron Fundingsland
Swede Halbrook
Reggie Halligan
Johnny Jarboe
Larry Paulus
Ron Robins
Ted Romanoff
Bill Toole
Tony Vlastelica
Tex Whiteman

1955 Pacific Coast Conference Champions

Bob Allord
Jay Dean
Ron Fundingsland
Swede Halbrook
Reggie Halligan
Johnny Jarboe
Larry Paulus
Ron Robins
Phil Shadoin
Bill Toole
Tony Vlastelica
Tex Whiteman

1958 Pacific Coast Conference Co-Champions

Jim Anderson
Larry Copple
Roy Critser
Dave Gambee
Gary Goble
Lee Harman
Gary Haynes
Ted Miller
Wayne Moss
Ken Nanson
Bruce Patterson
Arnold Schroeder
Leighton Tuttle

1963 NCAA Western Regional Champions

Terry Baker
Lynn Baxter
Rex Benner
Mel Counts
Tim Campbell
Grant Harter
Dave Hayward
Jim Jarvis
Jim Kraus
Steve Pauly
Frank Peters
Gary Rossi
Ray Torgerson

1966 AAWU Champions

Ray Carlile
Scott Eaton
Dave Fox
Bob Franz
Ed Fredenburg
Larry French
Harry Gunner
Karl Weide
Rick Whelan
Charlie White
Gary Wilken

1980 Pacific-10 Champions

Dwayne Allen
Ray Blume
William Brew
Danny Evans
Vince Hinchin
Rob Holbrook
Steve Johnson
Tony Martin
Andy McCluskey
Bill McShane
Mark Radford
Jamie Stangel
Jeff Stout
Jaap Verkerk

1981 Pacific-10 Champions

Ray Blume
William Brew
Lester Conner
Danny Evans
Rob Holbrook
Steve Johnson
Ray Lankford
Bill McShane
Mark Radford
Charlie Sitton
Jamie Stangel
Jeff Stout
Alan Tait
Jeff Wilson

1982 Pacific-10 Champions

William Brew
Lester Conner
Danny Evans
A.C. Green
Dean Hart
Rob Holbrook
Ray Lankford
Darrell Neal
Charlie Sitton
Jamie Stangel
Alan Tait
Jeff Wilson
Greg Wiltjer

1984 Pacific-10 Co-Champions

Rick Berry
Darryl Flowers
Pat Giusti
A.C. Green
Darrin Houston
Parrish Johnson
Tyrone Miller
Kevin Spivey
Jamie Stangel
Alan Tait
Steve Woodside

1990 Pacific-10 Co-Champions

Teo Alibegovic
Karl Anderson
Will Brantley
Bob Cavell
Allan Celestine
Kevin Grant
Kevin Harris
Scott Haskin
Earl Martin
Lamont McIntosh
Charles McKinney
Gary Payton
Chris Rueppell
Rich Wold

TOURNAMENT TITLES

1956 — Far West Classic
1957 — Far West Classic
1958 — Far West Classic
1959 — Far West Classic
1960 — Far West Classic
1961 — Far West Classic
1962 — Far West Classic
1963 — Far West Classic
1964 — Far West Classic
1965 — Far West Classic
1970 — Far West Classic
1979 — Far West Classic
1980 — Far West Classic
1981 — Suntory Ball
1982 — River City Shootout
1983 — Far West Classic
1984 — Far West Classic
1987 — Far West Classic
1988 — Far West Classic
1989 — Far West Classic
1991 — Far West Classic
1993 — Far West Classic
1997 — Hawaii-Hilo Holiday Shootout

Game-by-Game Results

@ at Baker
PCC Playoffs

1942-43

(19-9, 8-8) Head Coach: Slat's Gill

Willamette	H	W	35-18
Camp Adair	W	W	41-31
Bruno Studio	H	W	58-37
City College NY	A	W	45-34
Wayne University	A	W	41-29
Michigan State	A	W	33-29
Bradley	A	L	41-42ot
Washington-St. Louis	A	W	40-32
Camp Adair	H	W	55-24
Vancouver Ramblers	H	W	54-47
Vancouver Ramblers	H	W	53-39
Willamette	H	W	46-28
1/19 * Washington	H	W	42-39
1/20 * Washington	H	L	39-44
* Idaho	A	W	52-49
* Idaho	A	L	44-56
2/1 * Washington State	A	L	35-44
2/2 * Washington State	A	L	52-55
* Idaho	H	W	48-32
* Idaho	H	W	57-51
2/12 * Oregon	H	W	46-36
2/13 * Oregon	A	L	35-50
2/19 * Oregon	H	L	38-42
2/20 * Oregon	A	W	41-31
2/23 * Washington State	H	W	51-35
2/24 * Washington State	H	W	43-34
3/5 * Washington	A	L	33-53
3/6 * Washington	A	L	35-44

* PCC contest

1943-44

(8-16, 5-11) Head Coach: Slat's Gill

Willamette	W	28-23	
Albina Shipyards	L	39-47	
Tillamook N.S.	W	39-30	
Tillamook N.S.	W	38-36	
Pacific Packards	L	43-49ot	
Pacific Packards	L	31-33	
Willamette	L	27-35	
Albina Shipyards	L	29-45	
* Idaho	A	W	39-34
* Idaho	A	W	38-34
1/10 * Washington State	A	L	41-45
1/11 * Washington State	A	L	35-49
1/15 * Oregon	A	L	33-52
1/24 * Washington	H	L	33-38
1/25 * Washington	H	L	36-42
1/29 * Oregon	H	L	38-43ot
2/4 * Washington	A	L	30-54
2/5 * Washington	A	L	29-56
* Idaho	H	W	34-29
* Idaho	H	W	52-48ot
2/18 * Oregon	A	L	38-46
2/19 * Oregon	H	L	39-42
2/25 * Washington State	H	L	45-52
2/26 * Washington State	H	W	55-44

* PCC contest

1944-45

(20-8, 10-6) Head Coach: Slat's Gill

Willamette	W	43-30	
Willamette	W	36-30	
Oregon Med. School	W	35-31	
Astoria N.A.S.	W	44-38	
Seattle Coast Guard	W	43-34	
Tillamook N.A.S.	W	49-31	
Willamette	W	48-31	
Willamette	A	W	33-27
Fee's Music Makers	H	L	26-43
Tillamook N.A.S.	A	W	47-27

Fee's Music Makers	A	W	40-25
Oregon Med. School	A	L	31-44
1/5 * Washington	A	L	45-48
1/6 * Washington	A	L	22-42
1/13 * Oregon	H	L	44-51
1/16 * Washington State	H	W	54-32
1/17 * Washington State	H	W	48-36
1/23 * Washington	H	W	57-43
1/24 * Washington	H	W	63-43
1/30 * Washington State	A	L	31-46
1/31 * Washington State	A	W	45-42ot
* Idaho	A	W	43-35
* Idaho	A	L	31-32
2/10 * Oregon	A	W	55-51
2/17 * Oregon	H	W	45-43
* Idaho	H	W	50-28
* Idaho	H	W	44-33
3/3 * Oregon	A	L	38-47

* PCC contest

1945-46

(13-11, 10-6) Head Coach: Slat's Gill

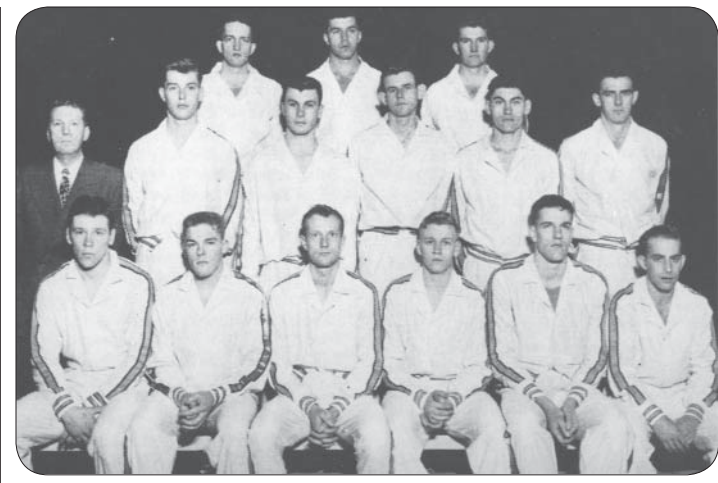
12/7 @ Seattle Coast Guard	N	W	39-37ot
12/8 @ Seattle Coast Guard	N	W	49-31
12/11 NW Insulators	H	L	35-38
12/15 Fee's Rollerdomo	H	W	51-50
12/18 Fee's Rollerdomo	H	L	46-60
12/21 DePaul	A	L	40-59 9,629
12/25 City College NY	A	L	27-43 18,000
12/28 Nebraska	A	L	40-48
1/4 * Idaho	H	W	49-40
1/5 * Idaho	H	W	49-45
1/12 * Oregon	A	W	50-47
1/18 * Oregon	H	L	48-53ot
1/19 * Oregon	A	W	59-45
1/25 * Idaho	A	L	37-42
1/26 * Idaho	A	L	38-43
1/28 * Washington State	A	W	50-48
1/29 * Washington State	A	L	34-49
2/4 * Washington	H	W	53-37
2/5 * Washington	H	W	58-48
2/15 * Washington State	H	W	63-43
2/16 * Washington State	H	W	54-33
2/22 * Washington	A	L	41-47
2/23 * Washington	A	W	55-36
3/2 * Oregon	H	L	41-42ot

* PCC contest
@ at Astoria

1946-47

(28-5, 13-3) Head Coach: Slat's Gill

12/3 Preferred Stocks	H	W	75-31
12/6 @ Bruno Studio	N	W	65-30
12/7 @ Bruno Studio	N	W	84-31
12/10 Willamette	H	W	66-29
12/14 Willamette	A	W	71-35
12/18 Bruno Studio	H	W	68-31
12/20 Portland All-Stars	A	W	46-17
12/21 Portland All-Stars	A	W	80-30
12/22 Fees Rollerdomo	A	W	89-37
12/23 Portland	A	W	58-38
12/26 Long Island	A	L	50-56
12/28 Canisius	A	W	48-40ot
1/2 Portland	H	W	70-30
1/6 * Washington State	H	W	52-28
1/7 * Washington State	H	W	53-30
1/11 * Oregon	H	W	73-69ot
1/17 * Oregon	A	W	58-45
1/24 * Washington	A	W	59-37
1/25 * Washington	A	L	44-60
1/31 * Washington	H	W	56-52ot
2/1 * Washington	H	W	84-63
2/8 * Oregon	H	W	71-57
2/11 * Idaho	H	W	77-40
2/12 * Idaho	H	W	71-37



1948-49 — NCAA Final Four Team

2/21 * Idaho	A	L	46-67
2/22 * Idaho	A	W	69-35
2/24 * Washington State	A	W	51-30
2/25 * Washington State	A	L	37-49
3/1 * Oregon	A	W	67-59
3/7 % UCLA	H	W	69-52
3/8 % UCLA	H	W	63-46
3/21 # Oklahoma	N	L	54-56
3/22 % Wyoming	N	W	63-46

* PCC contest
@ at Vancouver, WA
PCC Playoffs
NCAA West Regional Tournament at Kansas City

1947-48

(21-13, 10-6) Head Coach: Slat's Gill

11/28 Portland	A	W	56-45
11/29 Fee's Rollerdomo	N	W	43-38
12/1 Linfield	W	56-38	
12/2 Willamette	W	47-41	
12/6 Canisius	A	W	50-48
12/9 City College NY	A	L	51-58 17,000
12/13 Linfield	A	W	56-32
12/19 Oakland Bittners	H	W	73-63
12/20 Oakland Bittners	H	W	56-52
12/22 Sacramento Senators	H	L	60-77
12/23 Sacramento Senators	H	L	51-59
12/26 @ Stanford	N	L	48-53ot
12/27 San Francisco	A	L	42-44
12/29 California	H	L	55-60
12/30 California	H	W	63-47
1/2 Portland	A	W	48-44
1/3 Portland	W	64-54	
1/9 * Washington State	A	W	49-33
1/10 * Washington State	A	W	43-38
1/12 * Idaho	A	L	43-47
1/13 * Idaho	A	W	59-39
1/17 * Oregon	H	L	41-42
1/30 * Washington	H	W	71-63
1/31 * Washington	H	W	74-55
2/6 * Washington	A	L	26-52
2/7 * Washington	A	L	23-27
2/16 * Idaho	H	W	52-45
2/17 * Idaho	H	W	58-44
2/20 * Oregon	A	L	54-58
2/21 * Oregon	H	W	50-45
2/27 * Washington State	H	W	65-49
2/28 * Washington State	H	W	58-52
3/6 * Oregon	A	L	44-62
3/9 # Washington	N	L	42-59

* PCC contest
@ at San Francisco
PCC Northern Division Playoffs at Eugene

1949-50

(13-14, 8-8) Head Coach: Slat's Gill

12/1 Portland	A	W	51-46
12/3 Canisius	A	L	45-58
12/6 New York	A	W	49-45
12/8 Wisconsin	A	W	49-36
12/10 Minnesota	A	L	44-60
12/16 Utah	H	W	53-41 5,694
12/17 Utah	H	L	42-51 5,673
12/19 Indiana	H	L	60-65 3,973
12/20 Indiana	H	L	53-58 3,394
12/27 Minnesota	H	L	41-51 7,368
Stewart Chevrolet	H	W	54-46 4,510
1/3 * Washington State	H	L	38-42 6,137
1/4 * Washington State	H	W	54-53 6,114
1/13 * Oregon	H	W	65-49 8,030
1/20 * Washington State	A	L	39-53
1/21 * Washington State	A	L	34-51
1/23 * Idaho	A	W	48-37
1/24 * Idaho	A	W	51-39
2/3 * Washington	H	L	56-46 8,824
2/4 * Washington	H	L	44-52 6,715
2/10 * Oregon	A	L	34-45
2/14 * Idaho	H	W	48-44 5,320
2/15 * Idaho	H	W	56-46 5,460
2/24 * Oregon	H	W	51-42 10,251
2/25 * Oregon	A	L	40-45
3/3 * Washington	A	L	45-47
3/4 * Washington	A	L	54-57

* PCC contest
Total Home Attendance — 87,463 (average 6,247)
Note: First season in Gill Coliseum.



1946-47 — OSU's First NCAA Tournament Team

OSU in the Polls

169 WEEKS IN THE NATIONAL RANKINGS

Date	Poll	Ranking
Dec. 8, 1953	AP	13
Dec. 15, 1953	AP	11
	UPI	15
Dec. 22, 1953	AP	12
	UPI	11
Dec. 29, 1953	AP	4
	UPI	4
Jan. 5, 1954	AP	10
	UPI	11
Jan. 12, 1954	UPI	20
Jan. 19, 1954	UPI	16
Jan. 26, 1954	UPI	17
Feb. 9, 1954	UPI	17
Mar. 2, 1954	UPI	20
Mar. 9, 1954	AP	16-T
	UPI	16
Dec. 7, 1954	UPI	17
Jan. 18, 1955	UPI	19
Jan. 25, 1955	UPI	19
Feb. 1, 1955	AP	19
	UPI	15
Feb. 8, 1955	AP	18
	UPI	15
Feb. 15, 1955	AP	16
	UPI	14
Feb. 22, 1955	UPI	14
Mar. 1, 1955	AP	14
	UPI	12
Mar. 8, 1955	AP	10
	UPI	8
Dec. 5, 1956	AP	13
Feb. 1, 1956	AP	19
Dec. 17, 1957	AP	17
	UPI	10
Dec. 24, 1957	UPI	17
Dec. 31, 1957	AP	18
	UPI	11
Jan. 7, 1958	AP	15
	UPI	10
Jan. 14, 1958	AP	16
	UPI	11
Jan. 21, 1958	UPI	13
Jan. 28, 1958	AP	20
	UPI	14
Feb. 4, 1958	UPI	16
Mar. 4, 1958	UPI	20
Mar. 11, 1958	UPI	16
Jan. 2, 1962	UPI	10
Jan. 9, 1962	UPI	9
Jan. 16, 1962	UPI	10
Jan. 23, 1962	UPI	10
Jan. 30, 1962	UPI	9
Feb. 6, 1962	AP	10
	UPI	9
Feb. 13, 1962	AP	6
	UPI	6
Feb. 20, 1962	AP	10
	UPI	8
Feb. 27, 1962	UPI	11
Mar. 6, 1962	UPI	13
Mar. 13, 1962	UPI	11
Dec. 4, 1962	AP	7
	UPI	5

Date	Poll	Ranking
Dec. 11, 1962	AP	9
	UPI	6
Dec. 18, 1962	UPI	13
Jan. 1, 1963	UPI	10
Jan. 8, 1963	UPI	11
Jan. 15, 1963	AP	10
	UPI	10
Jan. 22, 1963	UPI	12
Jan. 29, 1963	AP	9
	UPI	9
Feb. 5, 1963	UPI	10
Feb. 12, 1963	UPI	10
Feb. 19, 1963	UPI	13
Feb. 26, 1963	UPI	19
Mar. 5, 1963	UPI	15
Mar. 12, 1963	UPI	14
Dec. 10, 1964	AP	9
	UPI	7
Dec. 17, 1964	UPI	10
Dec. 24, 1964	AP	9
	UPI	7
Dec. 31, 1964	AP	8
	UPI	8
Jan. 7, 1964	AP	6
	UPI	6
Jan. 14, 1964	AP	7
	UPI	7
Jan. 21, 1964	UPI	10
Jan. 28, 1964	UPI	10
Feb. 4, 1964	UPI	10
Feb. 11, 1964	AP	9
	UPI	8
Feb. 18, 1964	AP	7
	UPI	6
Feb. 25, 1964	AP	6
	UPI	5
Mar. 3, 1964	AP	6
	UPI	5
Mar. 10, 1964	AP	6
	UPI	5
Jan. 4, 1966	UPI	20-T
Feb. 22, 1966	UPI	19
Mar. 1, 1966	UPI	14
Mar. 8, 1966	UPI	15
Jan. 12, 1971	AP	20
Jan. 30, 1973	UPI	17
Feb. 6, 1973	UPI	18
Feb. 11, 1975	AP	17
	UPI	11
Feb. 18, 1975	AP	20
	UPI	11
Feb. 25, 1975	AP	17
	UPI	10
Mar. 4, 1975	AP	15
	UPI	10
Mar. 11, 1975	AP	15
Mar. 18, 1975	AP	13
Apr. 2, 1975	AP	18
Jan. 13, 1976	AP	17
	UPI	20
Jan. 20, 1976	AP	13
	UPI	11
Jan. 27, 1976	AP	16
	UPI	15
Feb. 3, 1976	UPI	18
Dec. 4, 1979	AP	15
	UPI	14
Dec. 11, 1979	AP	14
	UPI	12
Dec. 18, 1979	AP	19
	UPI	20

Date	Poll	Ranking
Dec. 26, 1979	AP	18
	UPI	19
Jan. 1, 1980	AP	14
	UPI	12
Jan. 8, 1980	AP	9
	UPI	7
Jan. 15, 1980	AP	9
	UPI	7
Jan. 22, 1980	AP	2
	UPI	2
Jan. 29, 1980	AP	2
	UPI	2
Feb. 5, 1980	AP	4
	UPI	4
Feb. 12, 1980	AP	4
	UPI	4
Feb. 19, 1980	AP	6
	UPI	5
Feb. 26, 1980	AP	6
	UPI	5
Mar. 4, 1980	AP	5
	UPI	5
Dec. 2, 1980	AP	6
Dec. 9, 1980	AP	5
	UPI	5
Dec. 16, 1980	AP	4
	UPI	4
Dec. 23, 1980	AP	4
	UPI	4
Dec. 30, 1980	AP	2
	UPI	2
Jan. 6, 1981	AP	2
	UPI	2
Jan. 13, 1981	AP	1
	UPI	1
Jan. 20, 1981	AP	1
	UPI	1
Jan. 27, 1981	AP	1-T
	UPI	1
Feb. 3, 1981	AP	2
	UPI	1
Feb. 10, 1981	AP	2
	UPI	1
Feb. 17, 1981	AP	2
	UPI	1
Feb. 24, 1981	AP	1
	UPI	1
Mar. 3, 1981	AP	1
	UPI	1
Mar. 10, 1981	AP	2
	UPI	2
Dec. 8, 1981	AP	19
	UPI	15
Dec. 15, 1981	AP	20
Dec. 22, 1981	AP	16
	UPI	15
Dec. 29, 1981	AP	15
	UPI	12
Jan. 5, 1982	AP	17
	UPI	19
Jan. 12, 1982	AP	15
	UPI	14
Jan. 19, 1982	AP	12
	UPI	10
Jan. 26, 1982	AP	8
	UPI	7
Feb. 2, 1982	AP	10
	UPI	7
Feb. 9, 1982	AP	6
	UPI	6
Feb. 16, 1982	AP	5
	UPI	5

Date	Poll	Ranking
Feb. 23, 1982	AP	4
	UPI	4
Feb. 28, 1982	AP	4
	UPI	4
Mar. 2, 1982	AP	4
	UPI	4
Mar. 9, 1982	AP	4
	UPI	4
Nov. 30, 1982	AP	19
Nov. 29, 1983	AP	10
Dec. 6, 1983	AP	18
	UPI	17
Dec. 13, 1983	AP	14
	UPI	14
Dec. 20, 1983	AP	15
	UPI	14
Dec. 27, 1983	AP	19
Jan. 3, 1984	AP	15
	UPI	16
Jan. 10, 1984	AP	16
	UPI	14
Jan. 17, 1984	AP	11
	UPI	10
Jan. 24, 1984	UPI	20
Jan. 31, 1984	UPI	20
Feb. 21, 1984	AP	20
	UPI	15
Feb. 28, 1984	AP	20
	UPI	20
Mar. 6, 1984	AP	20
	UPI	17
Mar. 13, 1984	AP	17
	UPI	20
Jan. 8, 1985	AP	20
	UPI	12
Jan. 15, 1985	AP	14
	UPI	11
Jan. 22, 1985	AP	10
	UPI	8
Jan. 29, 1985	AP	14
	UPI	12
Feb. 5, 1985	AP	16
	UPI	11
Feb. 12, 1985	AP	18
	UPI	17
Feb. 19, 1985	AP	19
	UPI	17
Dec. 6, 1988	UPI	20
Dec. 5, 1989	AP	24
	UPI	20
Dec. 12, 1989	AP	23
Dec. 19, 1989	AP	21
	UPI	17
Dec. 26, 1989	AP	23
Jan. 2, 1990	AP	23
Jan. 9, 1990	AP	22
Jan. 16, 1990	AP	18
Jan. 23, 1990	AP	17
	UPI	16
Jan. 30, 1990	AP	21
Feb. 6, 1990	AP	18
	UPI	17
Feb. 13, 1990	AP	16
	UPI	16
Feb. 20, 1990	AP	17
	UPI	18
Feb. 27, 1990	AP	16
	UPI	15
Mar. 6, 1990	AP	22
Mar. 13, 1990	AP	22

TOP 10 AP AND UPI FINISHES

Associated Press
(writers poll, began 1949)

1955 — 10th
1964 — 6th
1980 — 5th
1981 — 2nd
1982 — 4th

United Press International
(coaches poll, began 1951)

1951 — 8th
1965 — 5th
1980 — 5th
1981 — 2nd
1982 — 4th